

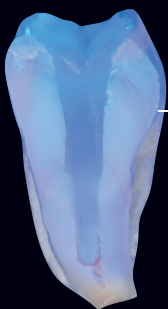
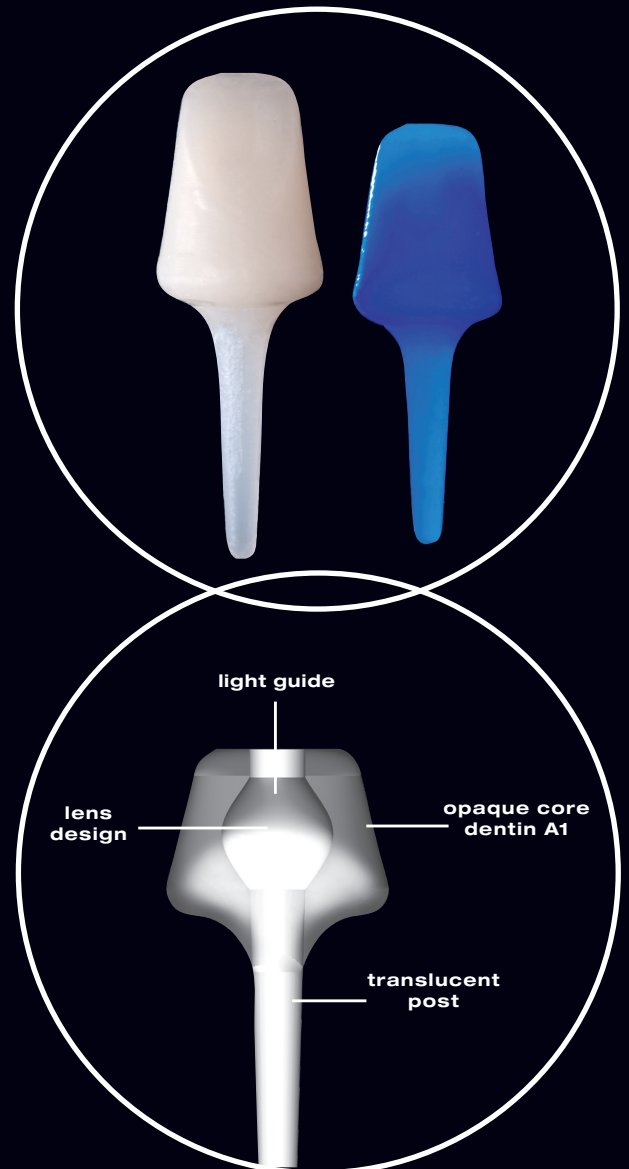
DIRECT SYSTEM

POST & CORE

INNOVATION

The edelweiss POST & CORE system is a laser sintered monobloc, designed to prevent the wedging effect. The posts have a conical shape for perfect post space adaptation. The translucency of the fibre free post, supported by the lens design, allows uninterrupted light transmission for complete polymerization.

The adhesive bonding also avoids the wedging effect. The preparation of the core has a similar feel to that of the natural tooth and makes handling easier. The opaque buildup in A1 also offers various anatomical forms. It is possible to carry out the treatment in just one session, which is both time and cost effective for patient and dentist alike.



Translucent Post for periapical light polymerisation

Light Source:
"VALO by Ultradent"

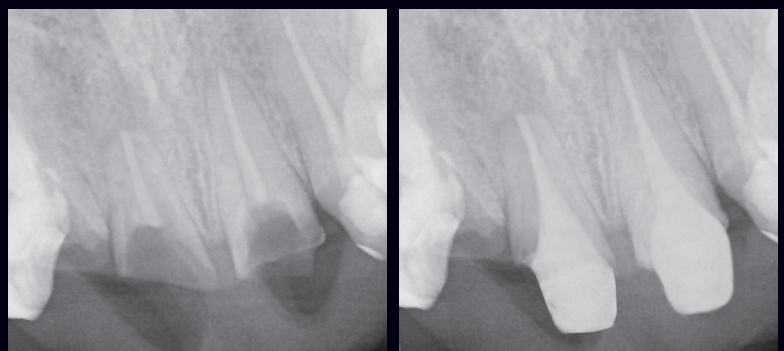


Optimised workflow reduces chairtime up to 40 percent



The edelweiss POST & CORE system is a simple and a quick solution for all your post-endodontic needs. The one-piece composite POST & CORE can be customized as per the needs of the tooth with a true monobloc effect.

It is an ideal choice for rebuilding and strengthening broken down teeth. Cementation using edelweiss flowable composite, dual cure composite material or adhesive resin cement.





Dr. Deepak Mehta
B.D.S, M.D.S, PhD
Bangalore, India

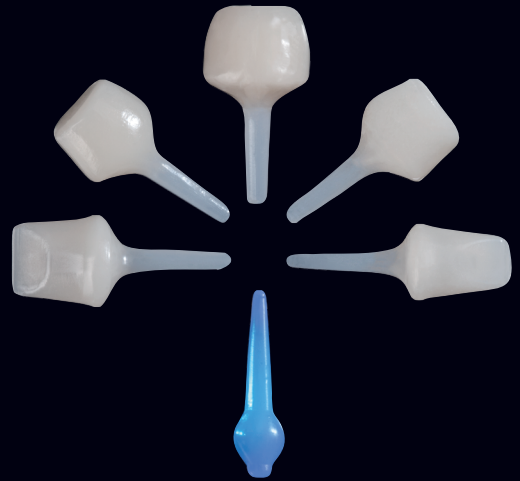
DIRECT SYSTEM

POST & CORE

edelweiss POST & CORE

"The bio-ceramic edelweiss POST & CORE are characterized by a homogeneous glass-ceramic phase embedded in a carbon matrix. The glass crystals are sintered and vitrified to a monobloc which leads to perfect mechanics within the material. The flexural strength is similar to that of natural tooth. Congruent precision dental drilling creates a perfectly prepared post space. Different sizes of drills enable therapy for all dental anatomies. There are three different types of the edelweiss POST & CORE: anteriors, premolars and molars."

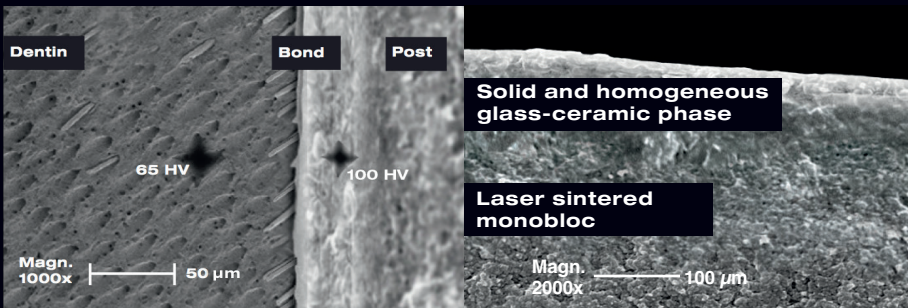
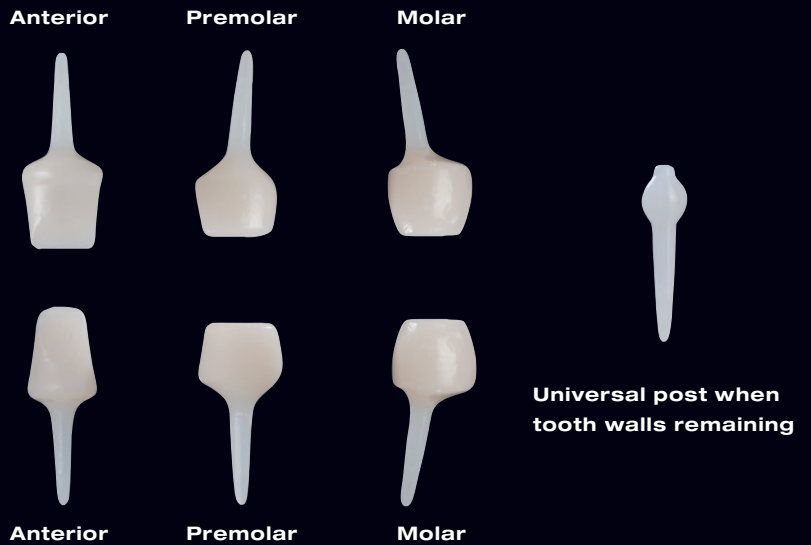
"The difference lies in the force buffer of the monobloc"



ADVANTAGES

- Prefabricated POST & CORE
- Translucent post for periapical light polymerisation
- Innovative monobloc of post and core with A1 buildup for natural integration
- Monobloc avoids wedging effect
- Biocompatible
- Flexural modulus 20 GPa like Dentin (15 - 20 GPa)
- Radio-opaque
- Cuts like dentin
- Superior adhesion to the root canal
- One session, reduced treatment time
- Time and cost effective

PRODUCT RANGE



Technical Data	POST & CORE
Flexural Strength	200 MPa
Compressive Strength	550 MPa
Flexural Modulus	20 GPa
Surface Hardness	100 HV

(Source: internal data: R&D and QM department edelweiss dentistry)

office@edelweissdentistry.com
www.edelweissdentistry.com

© 2022 edelweiss dentistry products gmbh • Austria. All material contained in this brochure are the property of edelweiss dentistry products gmbh • Austria. No part of this publication may be reproduced, distributed, or transmitted in any form or by any means, without the prior written permission of the edelweiss dentistry products gmbh • Austria. All Rights Reserved.